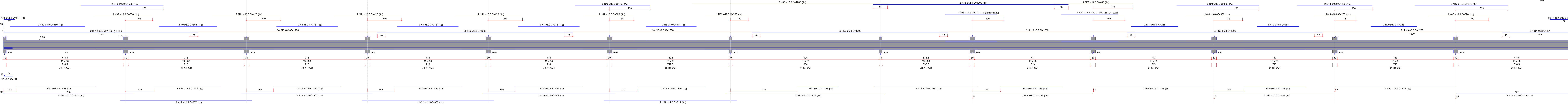


VB1

ESC 1:50



RELAÇÃO DO AÇO

ACO	N	DIAM	QUANT	C TOTAL	C TOTAL
CAB	1	8.0	140	6815	6815
CAB	2	8.0	140	6815	6815
CAB	3	8.0	140	6815	6815
CAB	4	8.0	140	6815	6815
CAB	5	8.0	140	6815	6815
CAB	6	8.0	140	6815	6815
CAB	7	8.0	140	6815	6815
CAB	8	8.0	140	6815	6815
CAB	9	8.0	140	6815	6815
CAB	10	8.0	140	6815	6815
CAB	11	8.0	140	6815	6815
CAB	12	8.0	140	6815	6815
CAB	13	8.0	140	6815	6815
CAB	14	8.0	140	6815	6815
CAB	15	8.0	140	6815	6815
CAB	16	8.0	140	6815	6815
CAB	17	8.0	140	6815	6815
CAB	18	8.0	140	6815	6815
CAB	19	8.0	140	6815	6815
CAB	20	8.0	140	6815	6815
CAB	21	8.0	140	6815	6815
CAB	22	8.0	140	6815	6815
CAB	23	8.0	140	6815	6815
CAB	24	8.0	140	6815	6815
CAB	25	8.0	140	6815	6815
CAB	26	8.0	140	6815	6815
CAB	27	8.0	140	6815	6815
CAB	28	8.0	140	6815	6815
CAB	29	8.0	140	6815	6815
CAB	30	8.0	140	6815	6815
CAB	31	8.0	140	6815	6815
CAB	32	8.0	140	6815	6815
CAB	33	8.0	140	6815	6815
CAB	34	8.0	140	6815	6815
CAB	35	8.0	140	6815	6815
CAB	36	8.0	140	6815	6815
CAB	37	8.0	140	6815	6815
CAB	38	8.0	140	6815	6815
CAB	39	8.0	140	6815	6815
CAB	40	8.0	140	6815	6815
CAB	41	8.0	140	6815	6815
CAB	42	8.0	140	6815	6815
CAB	43	8.0	140	6815	6815
CAB	44	8.0	140	6815	6815
CAB	45	8.0	140	6815	6815
CAB	46	8.0	140	6815	6815
CAB	47	8.0	140	6815	6815

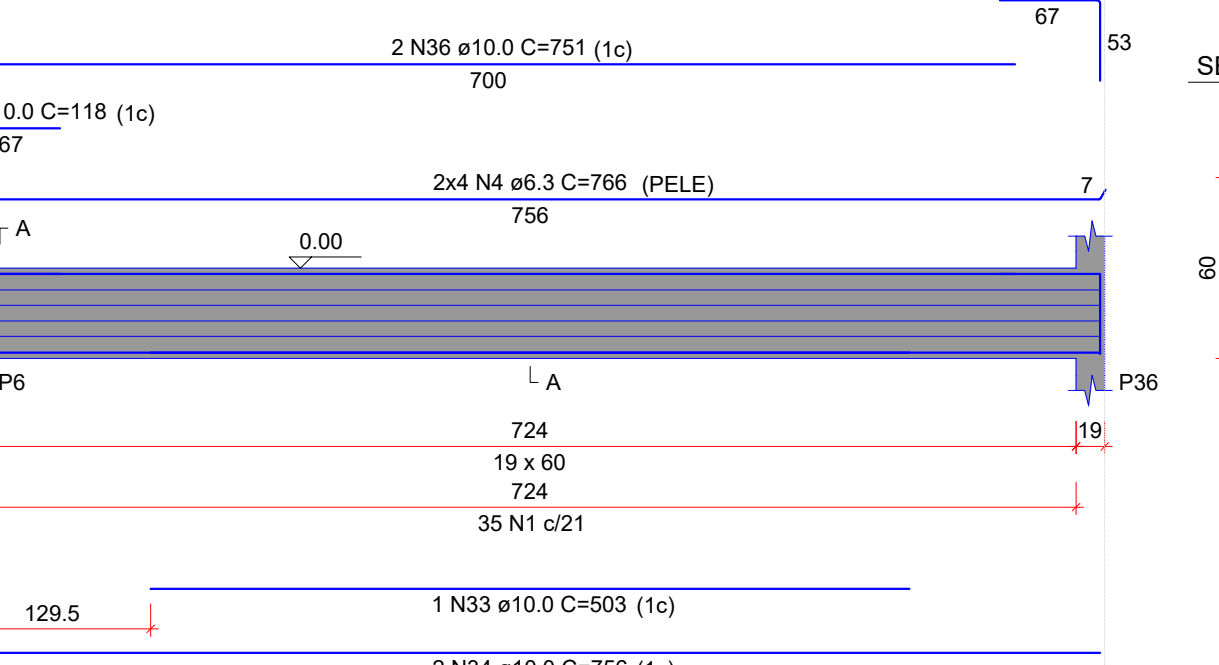
RELAÇÃO DO AÇO

ACO	N	DIAM	QUANT	C TOTAL	RESQ + 10%
CAB	1	8.0	140	6815	6815
CAB	2	8.0	140	6815	6815
CAB	3	8.0	140	6815	6815
CAB	4	8.0	140	6815	6815
CAB	5	8.0	140	6815	6815
CAB	6	8.0	140	6815	6815
CAB	7	8.0	140	6815	6815
CAB	8	8.0	140	6815	6815
CAB	9	8.0	140	6815	6815
CAB	10	8.0	140	6815	6815
CAB	11	8.0	140	6815	6815
CAB	12	8.0	140	6815	6815
CAB	13	8.0	140	6815	6815
CAB	14	8.0	140	6815	6815
CAB	15	8.0	140	6815	6815
CAB	16	8.0	140	6815	6815
CAB	17	8.0	140	6815	6815
CAB	18	8.0	140	6815	6815
CAB	19	8.0	140	6815	6815
CAB	20	8.0	140	6815	6815
CAB	21	8.0	140	6815	6815
CAB	22	8.0	140	6815	6815
CAB	23	8.0	140	6815	6815
CAB	24	8.0	140	6815	6815
CAB	25	8.0	140	6815	6815
CAB	26	8.0	140	6815	6815
CAB	27	8.0	140	6815	6815
CAB	28	8.0	140	6815	6815
CAB	29	8.0	140	6815	6815
CAB	30	8.0	140	6815	6815
CAB	31	8.0	140	6815	6815
CAB	32	8.0	140	6815	6815
CAB	33	8.0	140	6815	6815
CAB	34	8.0	140	6815	6815
CAB	35	8.0	140	6815	6815
CAB	36	8.0	140	6815	6815
CAB	37	8.0	140	6815	6815
CAB	38	8.0	140	6815	6815
CAB	39	8.0	140	6815	6815
CAB	40	8.0	140	6815	6815
CAB	41	8.0	140	6815	6815
CAB	42	8.0	140	6815	6815
CAB	43	8.0	140	6815	6815
CAB	44	8.0	140	6815	6815
CAB	45	8.0	140	6815	6815
CAB	46	8.0	140	6815	6815
CAB	47	8.0	140	6815	6815

Área de forma = 134.55 m²

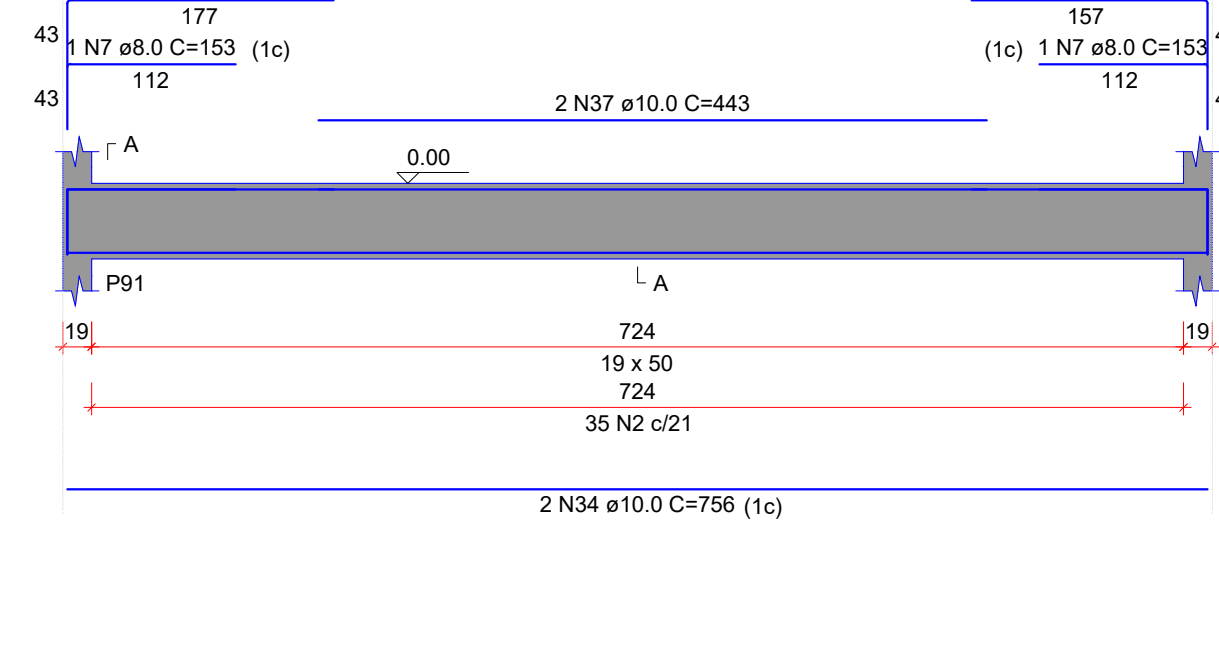
VB36

ESC 1:50



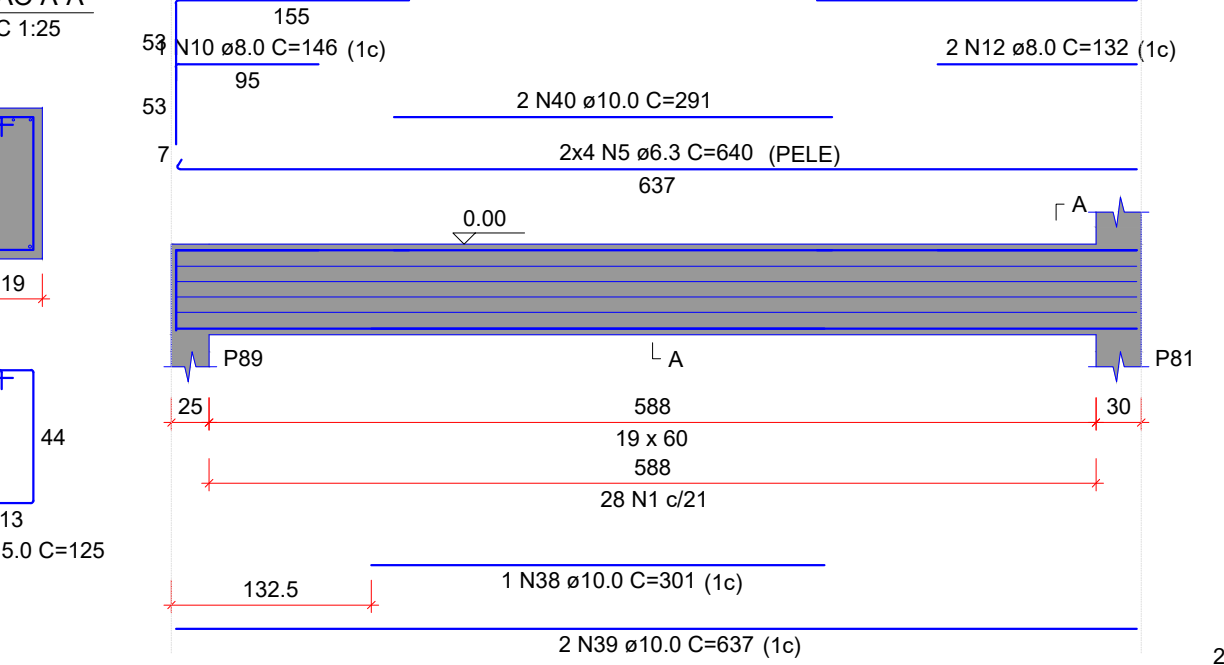
VB37

ESC 1:50



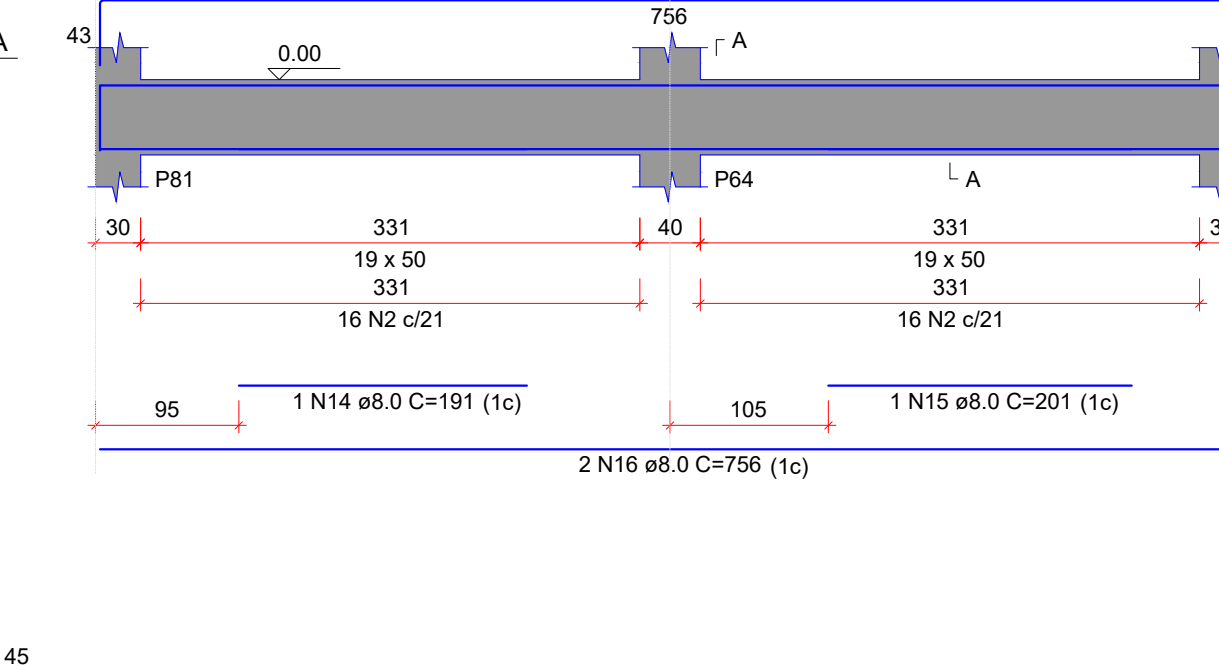
VB38

ESC 1:50



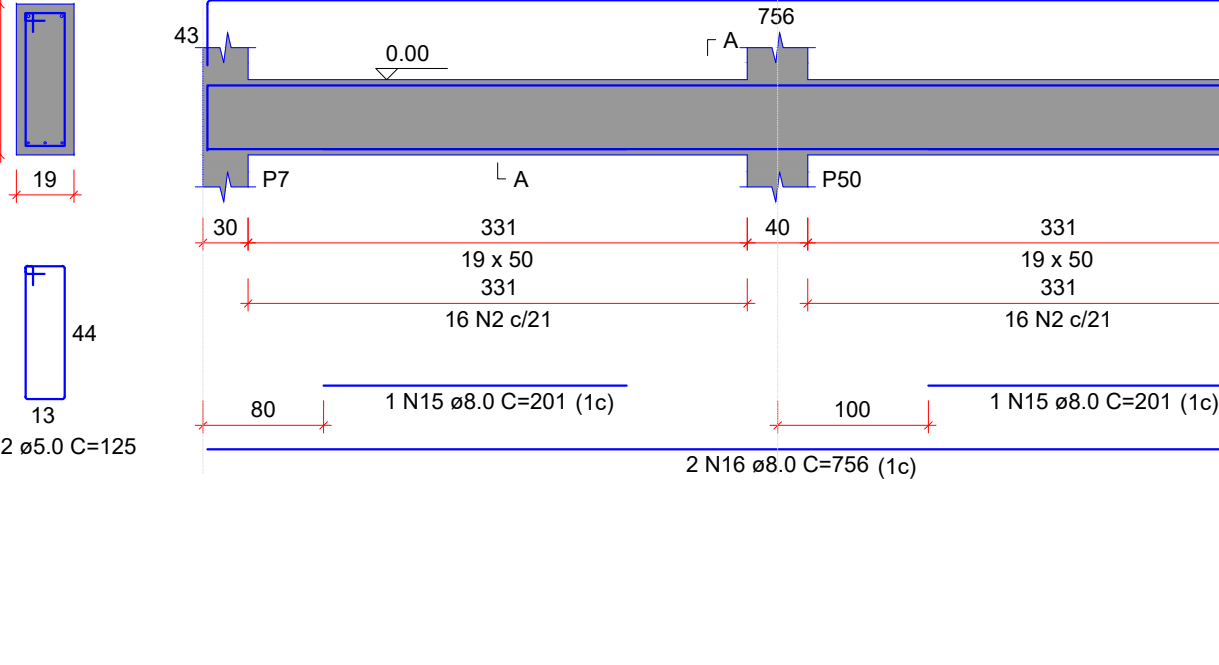
VB39

ESC 1:50



VB40

ESC 1:50



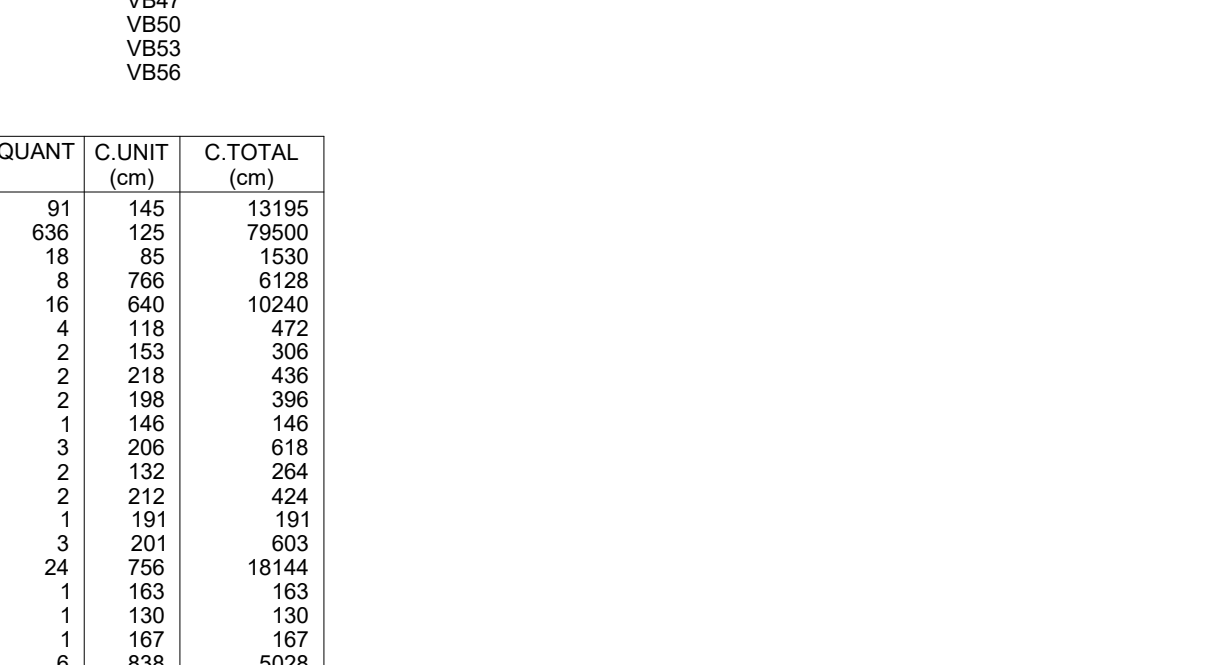
VB41

ESC 1:50



VB42

ESC 1:50



VB43

ESC 1:50



VB44

ESC 1:50



VB45

ESC 1:50



VB46

ESC 1:50



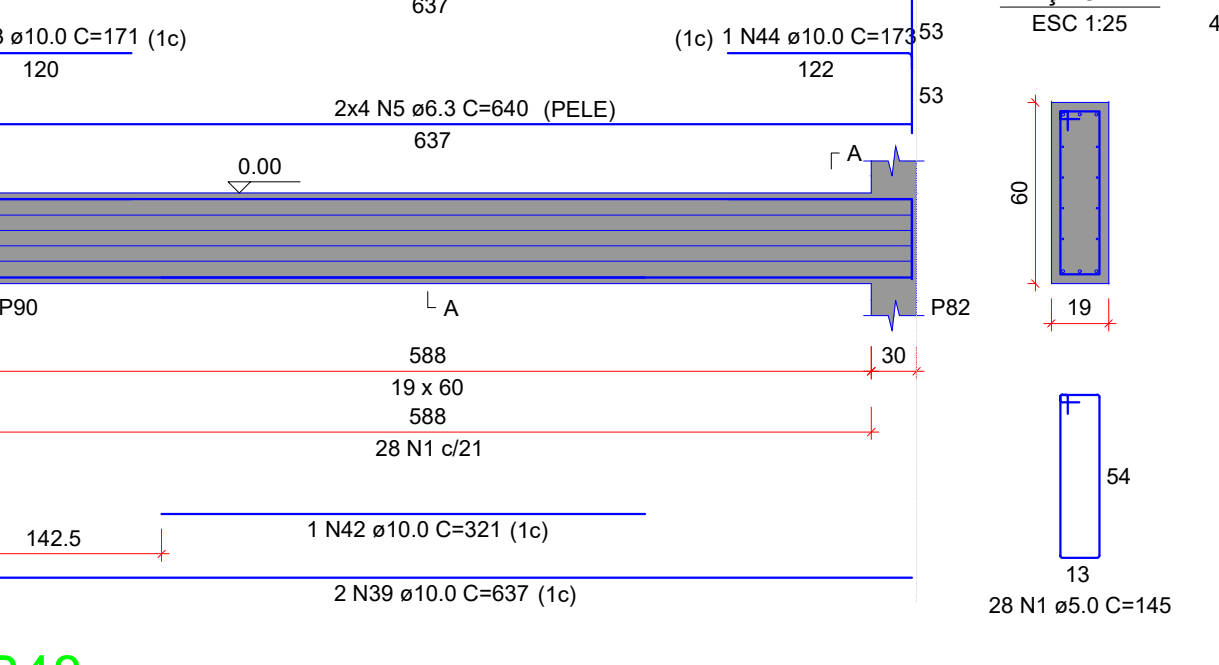
VB47

ESC 1:50



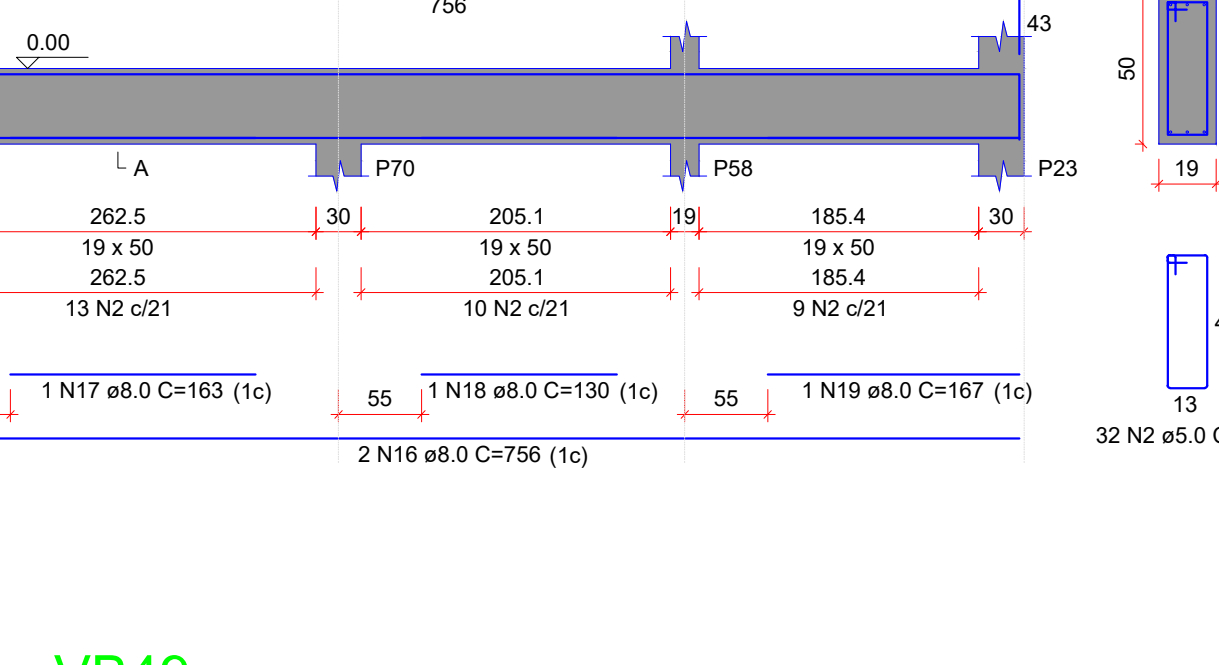
VB48

ESC 1:50



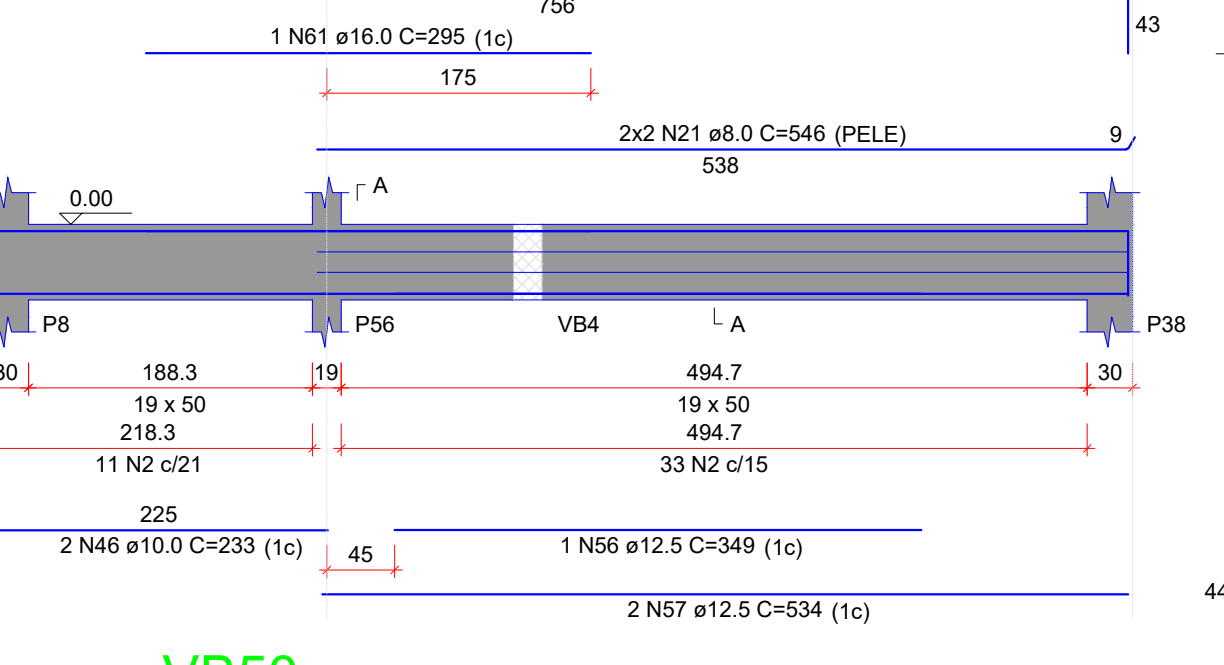
VB49

ESC 1:50



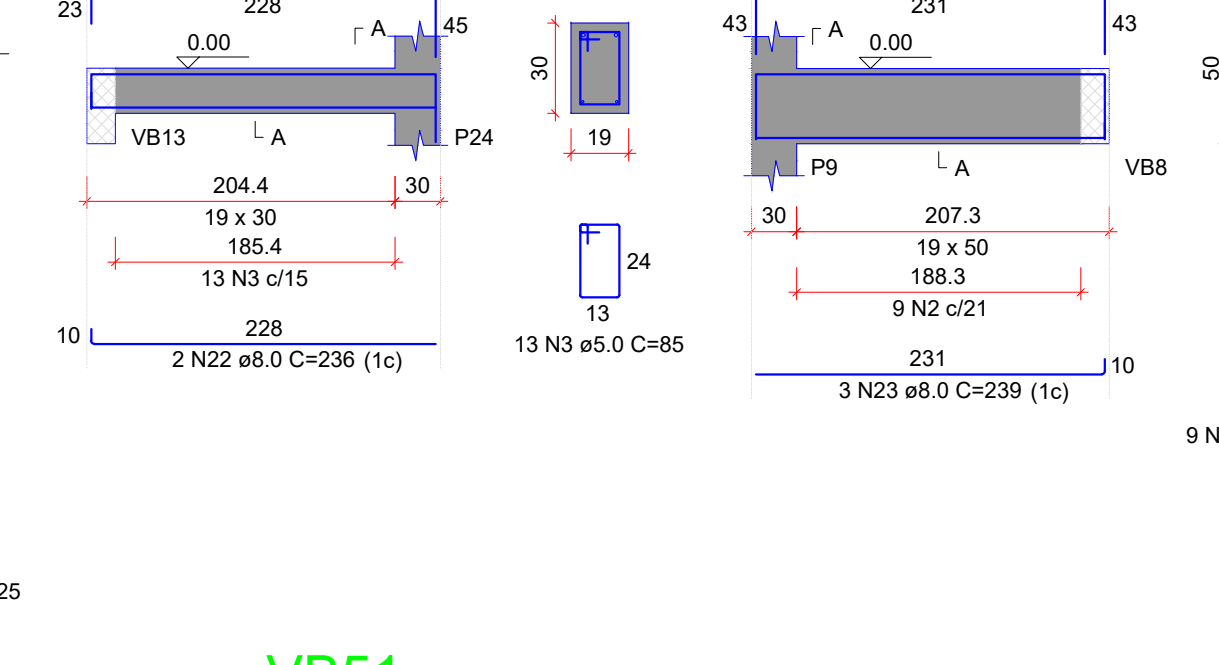
VB50

ESC 1:50



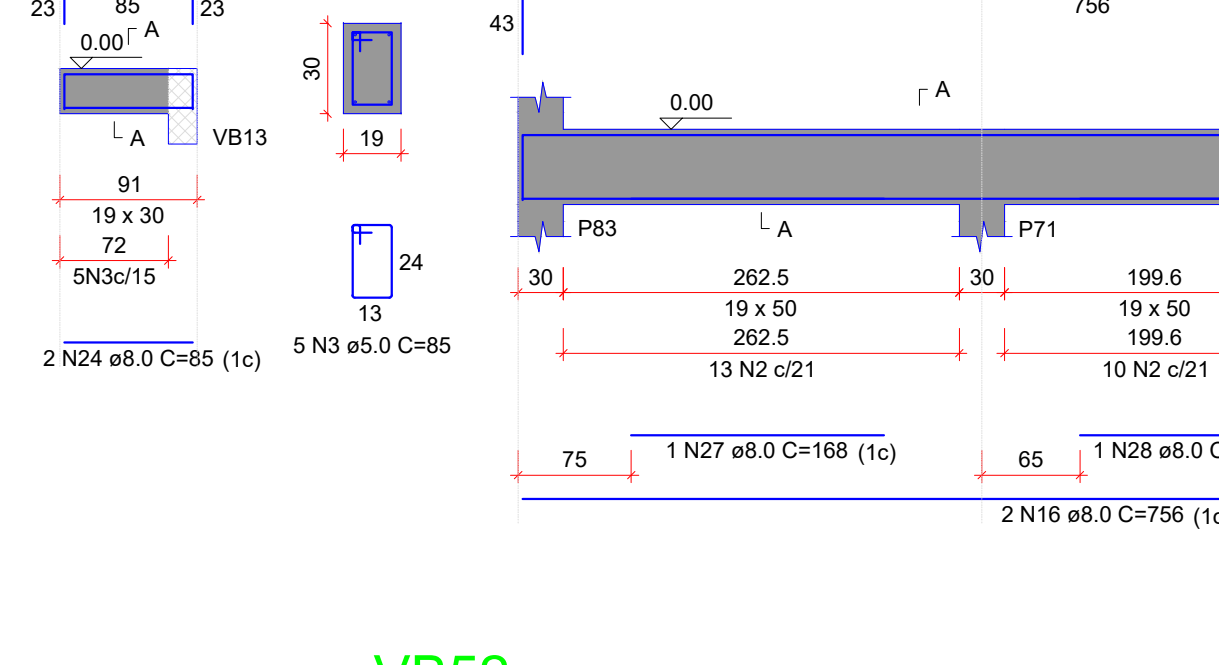
VB51

ESC 1:50



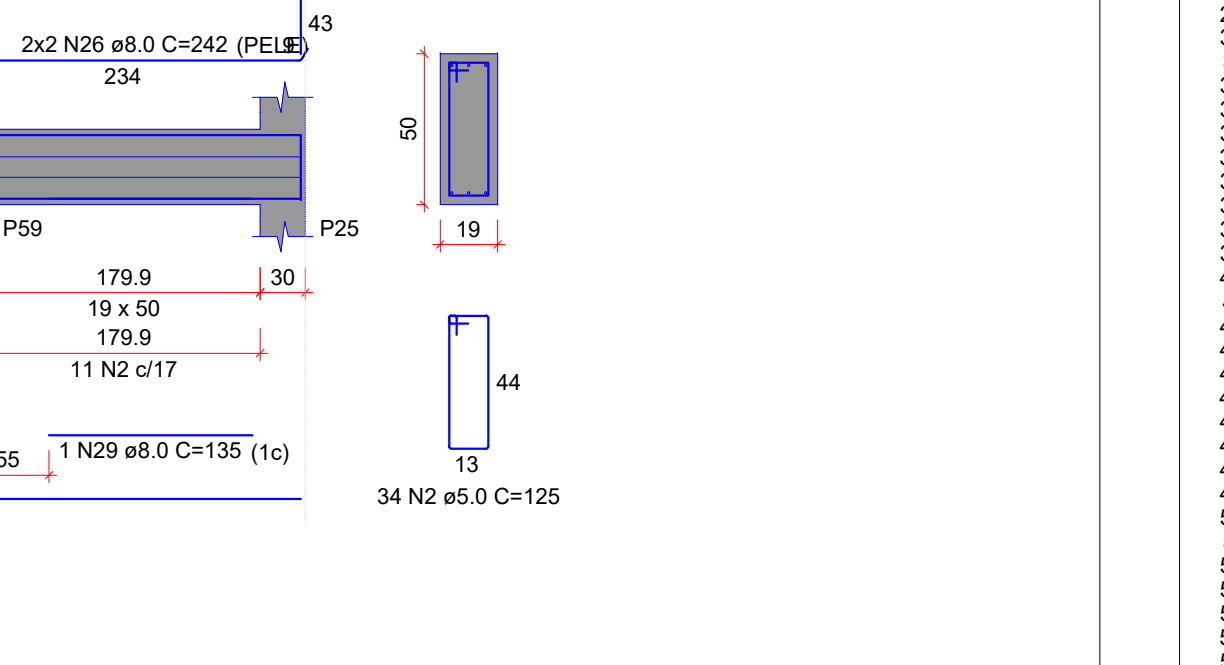
VB52

ESC 1:50



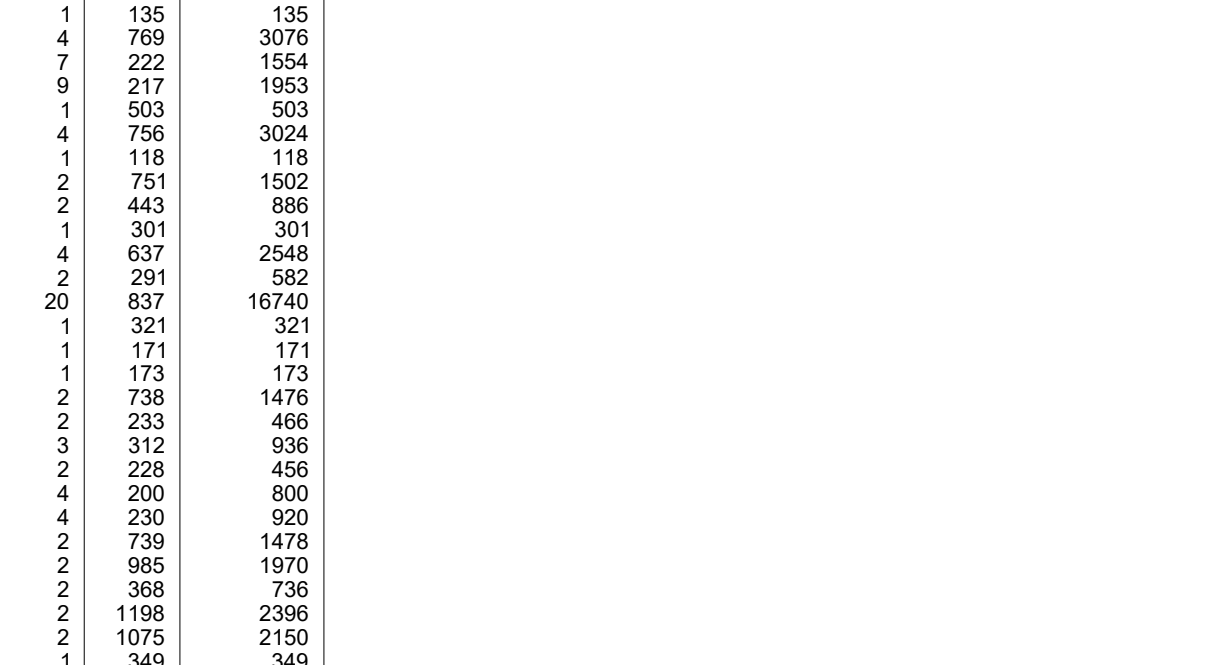
VB53

ESC 1:50



VB54

ESC 1:50



VB55

ESC 1:50



VB56

ESC 1:50



VB57

ESC 1:50



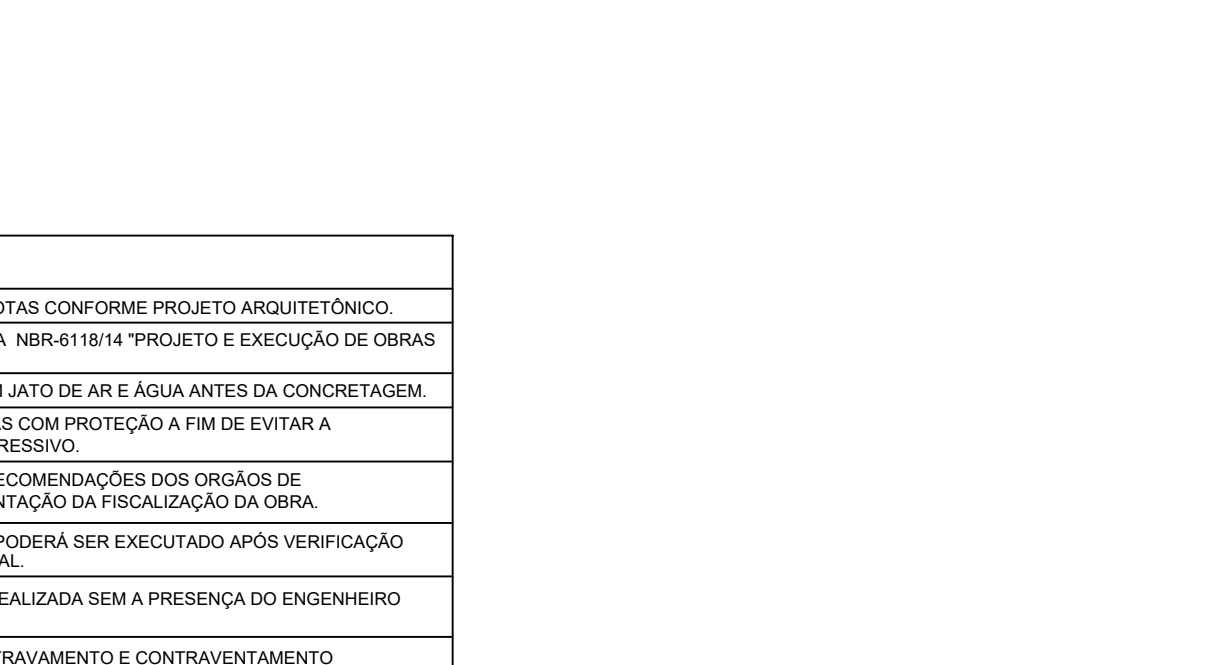
VB58

ESC 1:50



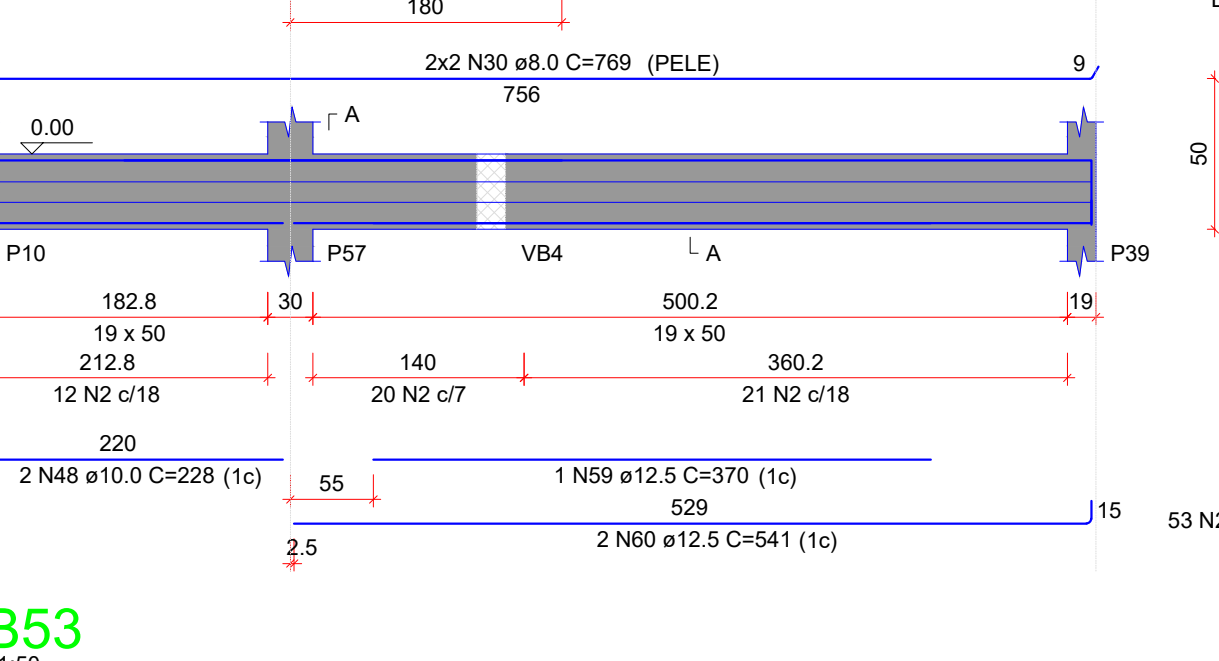
VB59

ESC 1:50



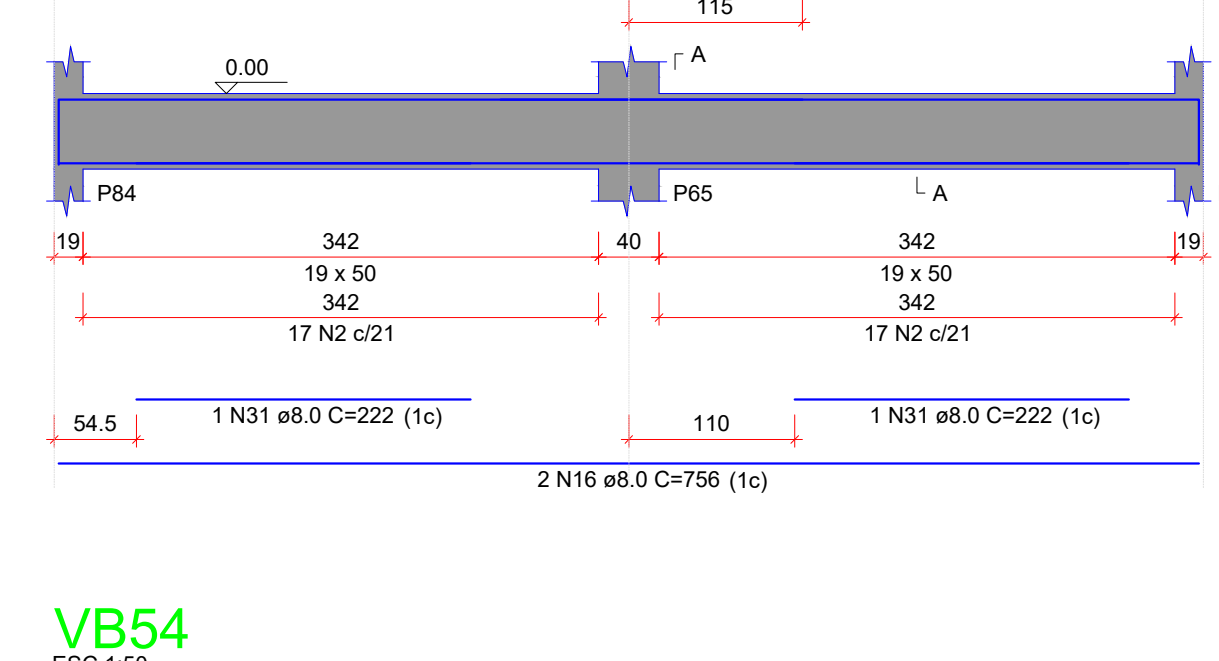
VB60

ESC 1:50



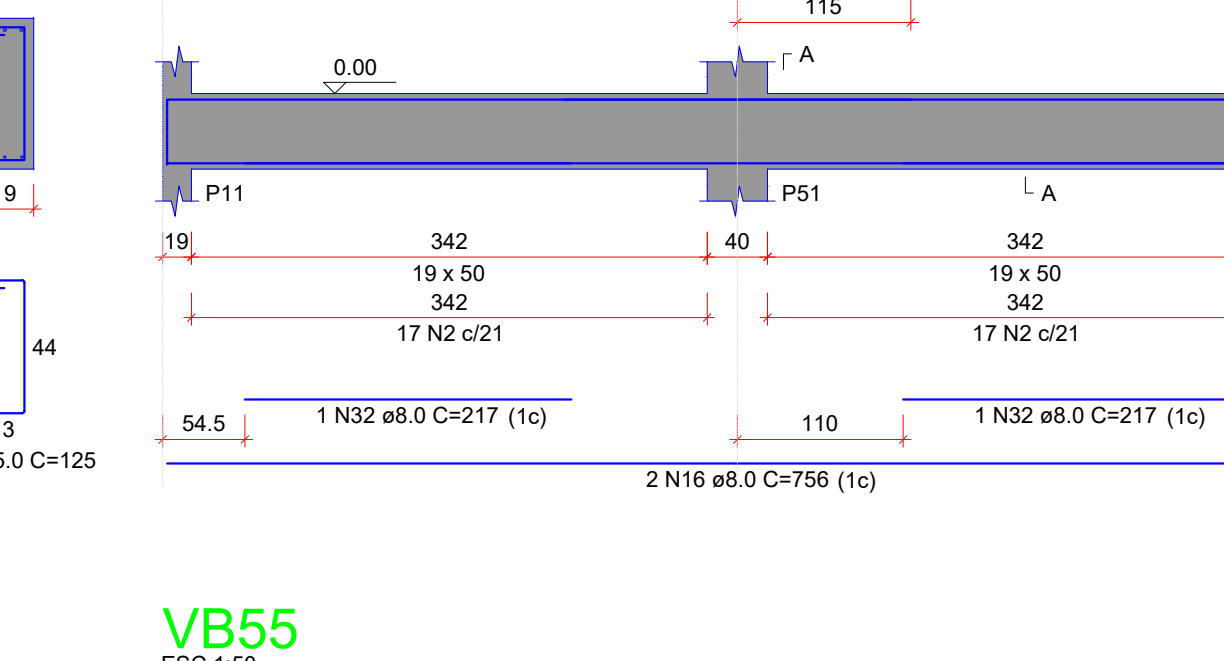
VB61

ESC 1:50



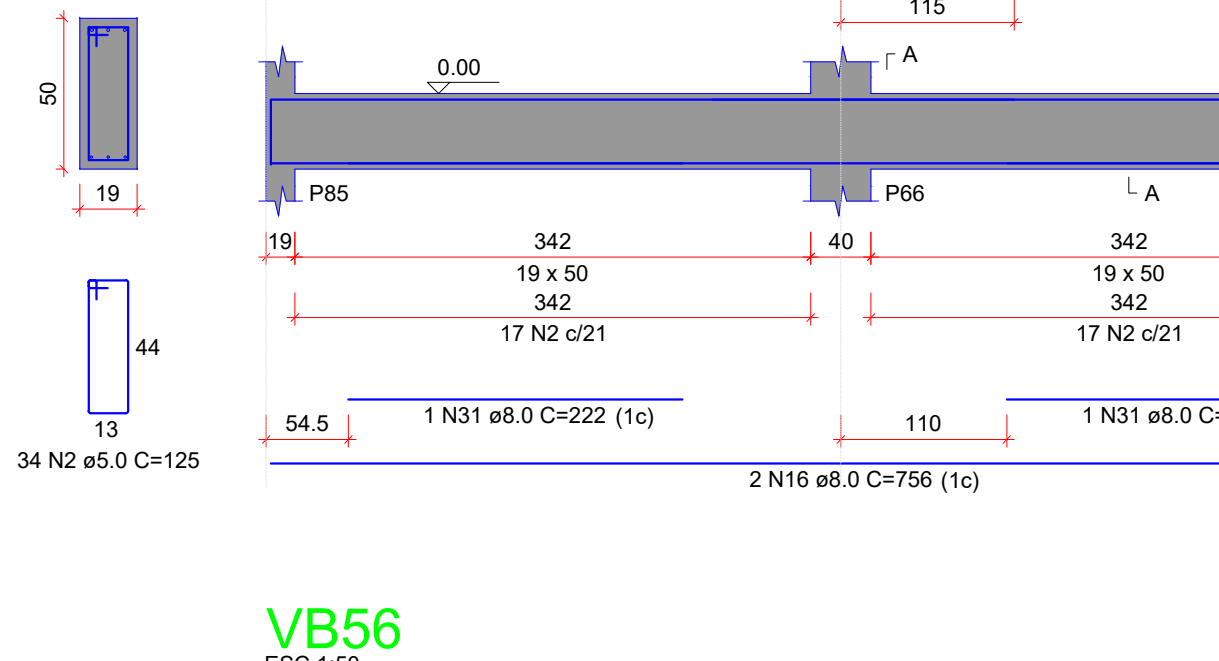
VB62

ESC 1:50



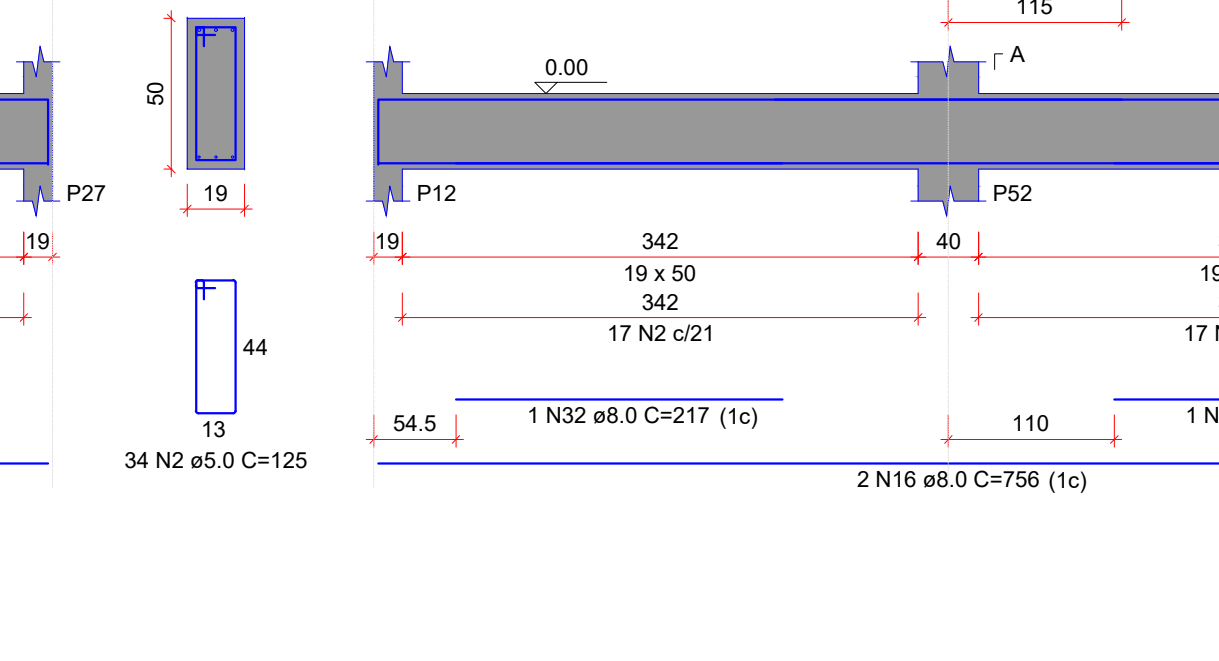
VB63

ESC 1:50



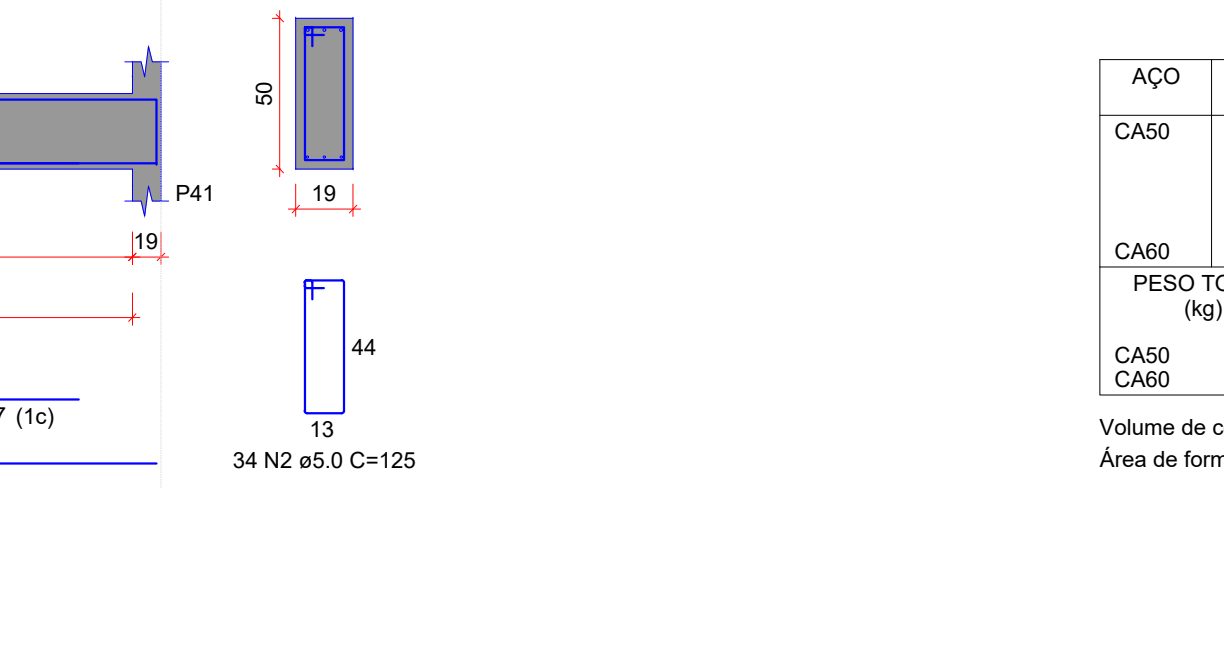
VB64

ESC 1:50



VB65

ESC 1:50



VB66

ESC 1:50



VB67

ESC 1:50



VB68

ESC 1:50



VB69

ESC 1:50



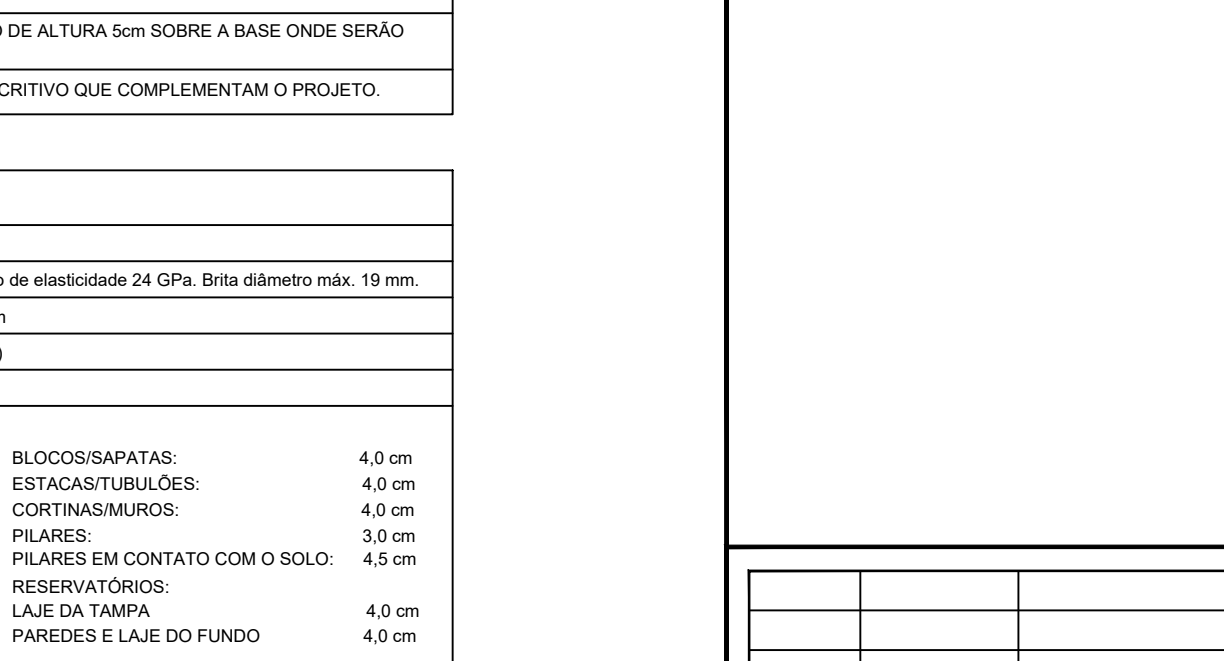
VB70

ESC 1:50



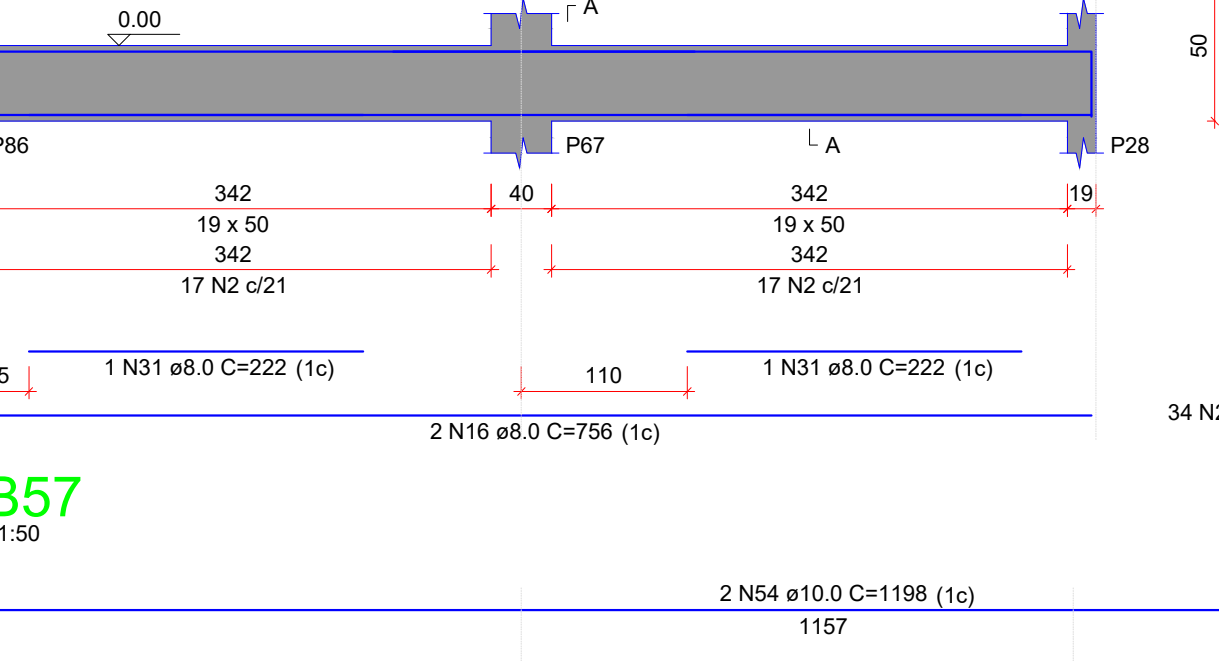
VB71

ESC 1:50



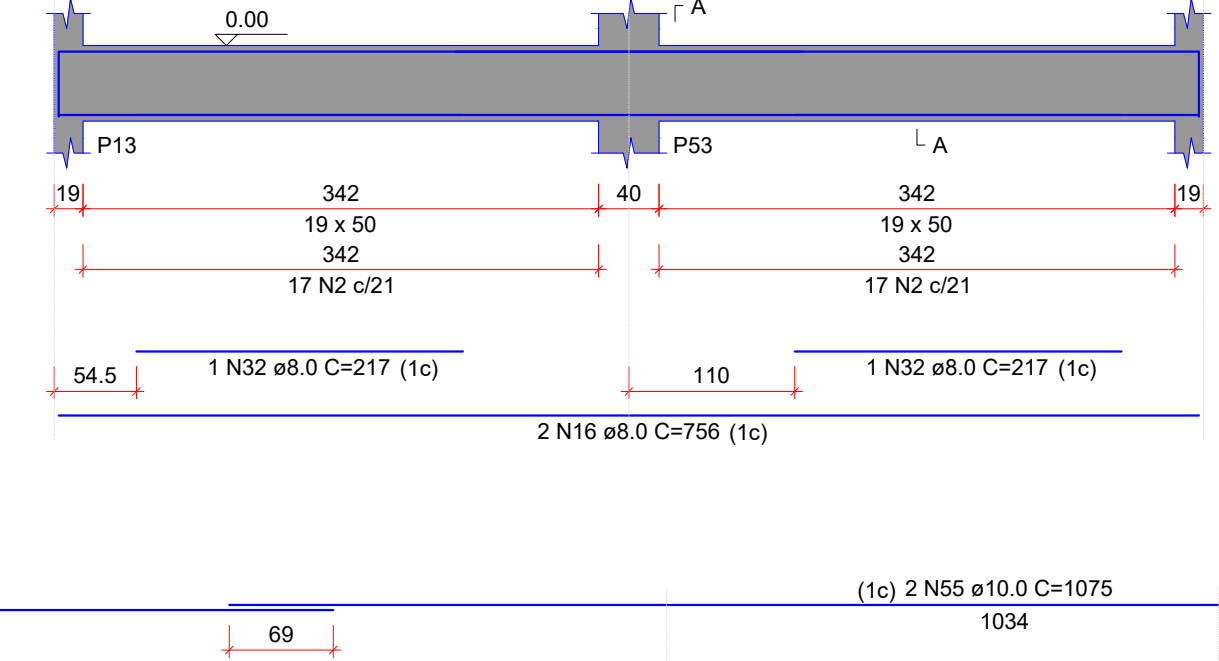
VB72

ESC 1:50



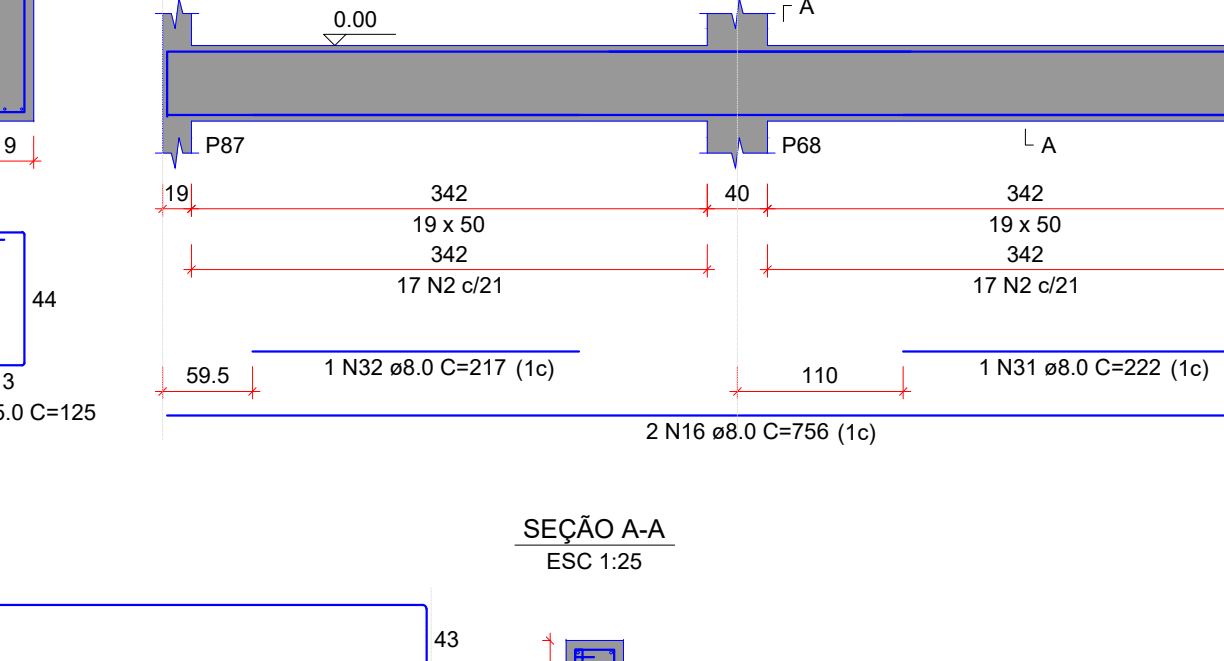
VB73

ESC 1:50



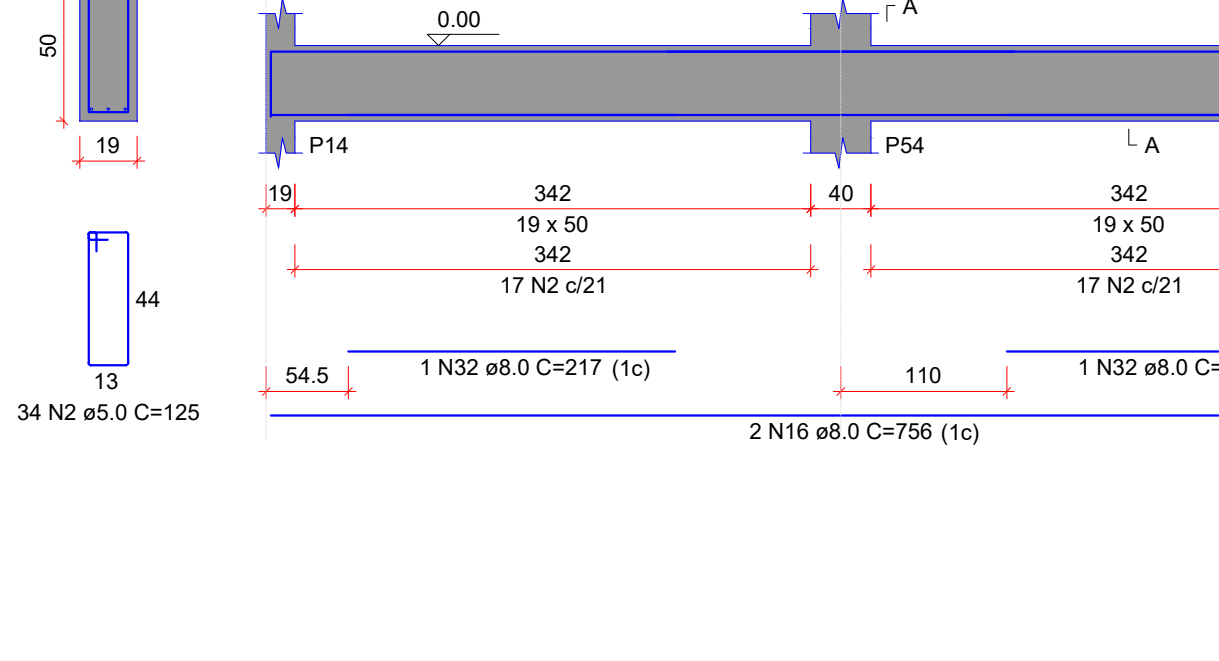
VB74

ESC 1:50



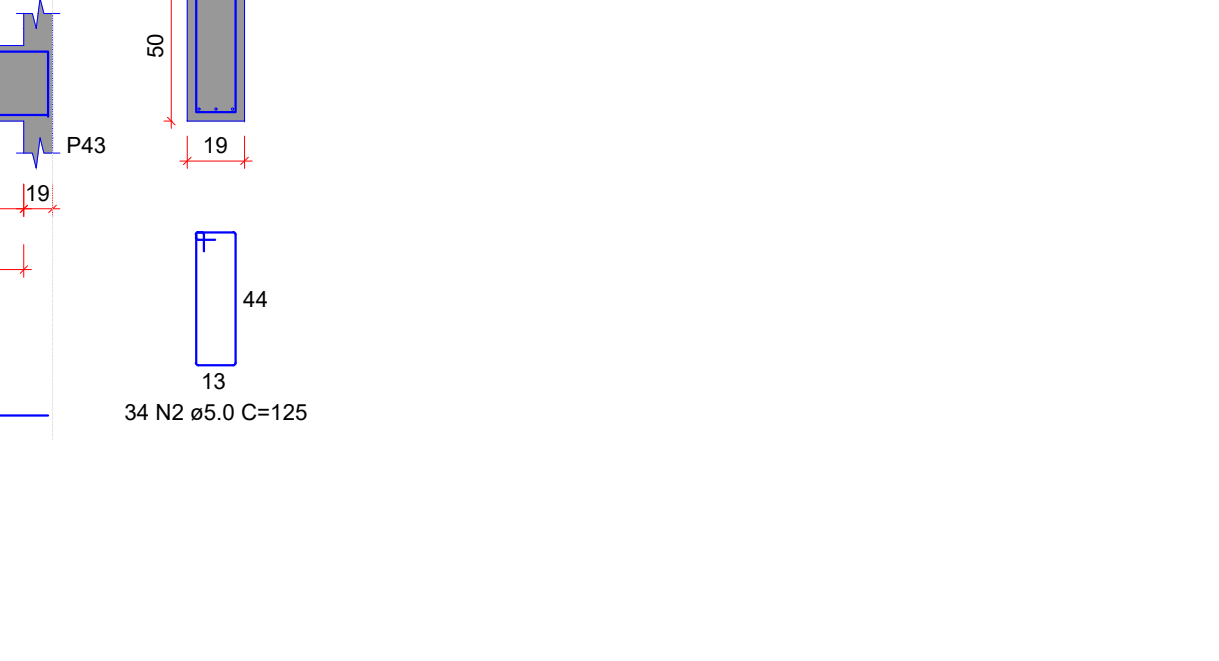
VB75

ESC 1:50



VB76

ESC 1:50



VB77